

## HOW TO GET TO THE BIG DIG AT SYDNEY HARBOUR YHA FROM THE ROCKS DISCOVERY MUSEUM

1. Turn left out of the front door of The Rocks Discovery Museum and walk to the end of Kendall Lane, towards Argyle St.



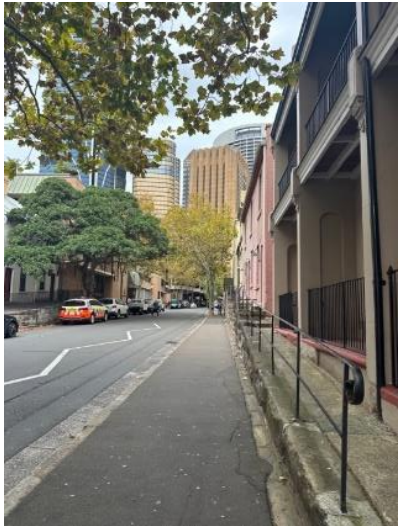
2. At the end of Kendall Lane, turn right onto Argyle Street.



3. At the corner of Argyle Street and Harrington Street, walk across the pedestrian crossing in front of the Clock Tower.



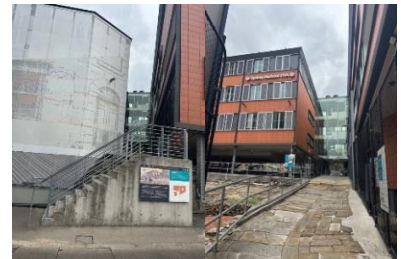
4. After crossing the road, turn left and walk along Harrington Street.



5. After the car park entrance, turn right and walk up the steps.



6. Walk past Susannah Place Museum, then walk across Cambridge Street to reach steps up to The Big Dig and Sydney Harbour YHA.



## ACCESSIBILITY OPTIONS

There is a lift (elevator) that can be used – please visit <http://www.therocks.com/whats-on#map> for an interactive map.

Alternatively use Cambridge Road from Argyle Street (past the Clocktower Building) as there are fewer steps than from Harrington St.